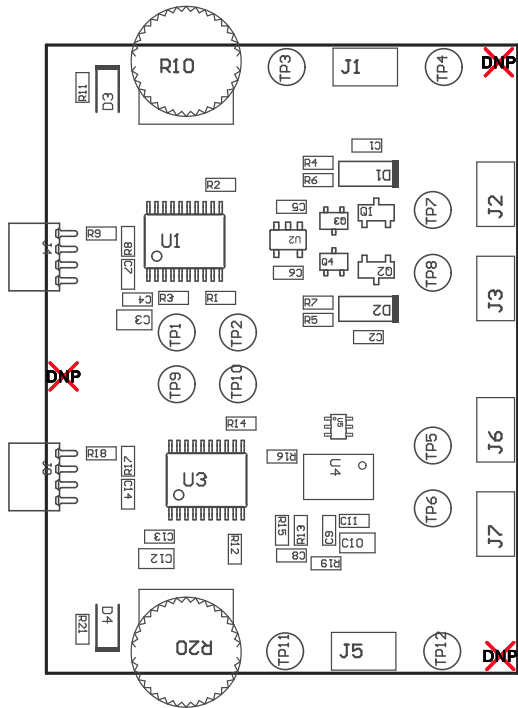
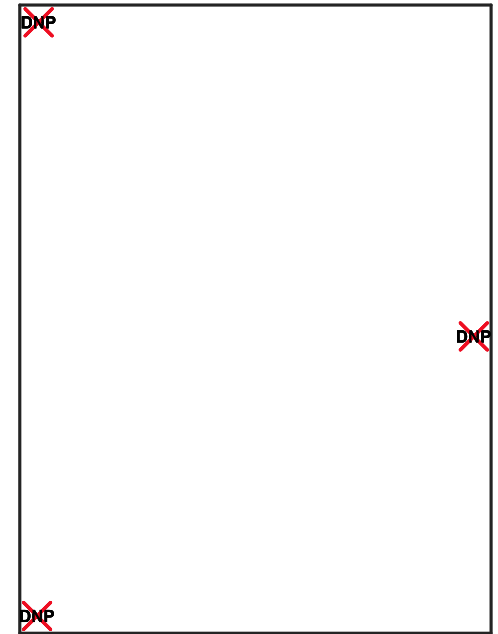


- Z21 ■Install label in silkscreened box after final wash. Text shall be 8 pt font. Text shall be per the Label Table in the PDF schematic.
- Z22 ■These assemblies are ESD sensitive, ESD precautions shall be observed.
- Z23 ■These assemblies must be clean and free from flux and all contaminants. Use of no clean flux is not acceptable.
- Z24 ■These assemblies must comply with workmanship standards IPC-A-610 Class 2, unless otherwise specified.



COMPONENTS MARKED 'DNP' SHOULD NOT BE POPULATED.  
ASSEMBLY VARIANT: 001

PCB VIEWED FROM TOP SIDE	BOARD #: TIDA-01162	REV: E1	SUN REV: Not In VersionControl
	TID #: TIDA-01162		
PLOT NAME = Top Assembly Drawing	GENERATED : 4/14/2016 11:01:53 AM		TEXAS INSTRUMENTS



COMPONENTS MARKED 'DNP' SHOULD NOT BE POPULATED.  
ASSEMBLY VARIANT: 001

PCB VIEWED FROM BOTTOM SIDE	BOARD #: TIDA-01162	REV: E1	SUN REV: Not In VersionControl
	TID #: TIDA-01162		
PLOT NAME = Bottom Assembly Drawing	GENERATED : 4/14/2016 11:01:55 AM		TEXAS INSTRUMENTS